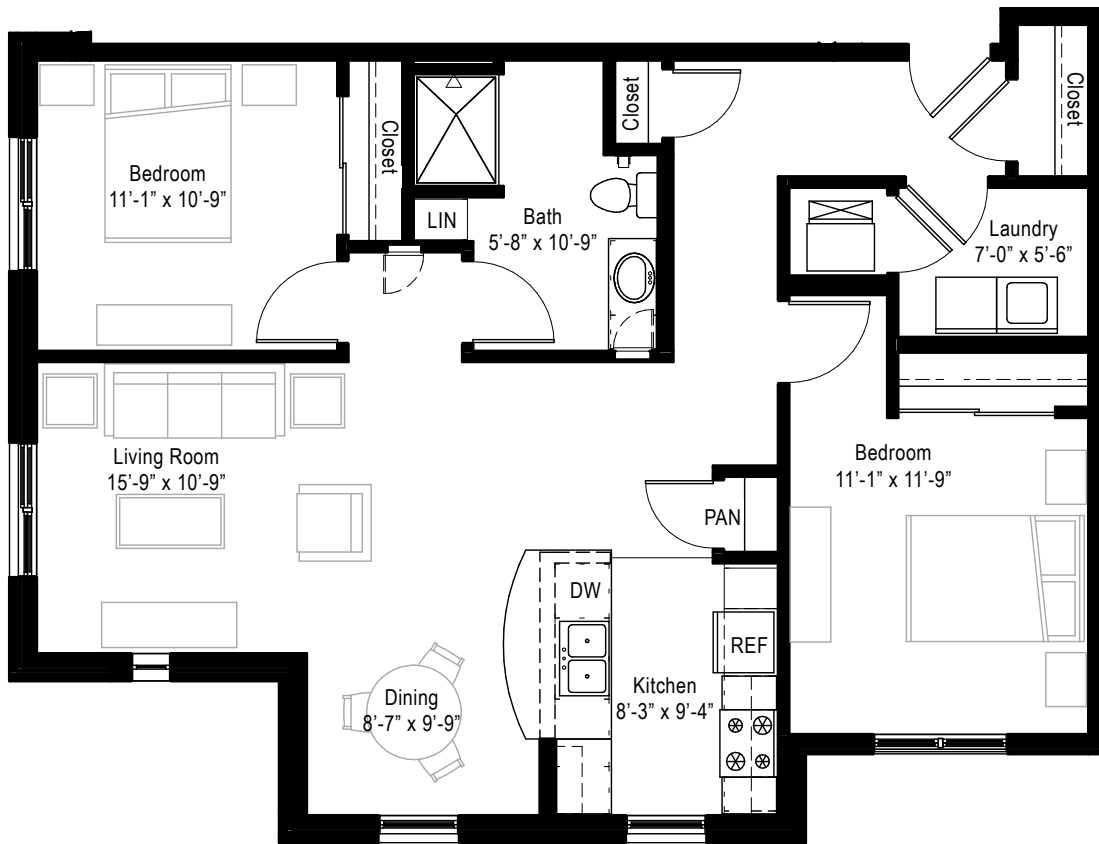


► BLDG 2 (D)
2 BEDROOM ▪ 1 BATH ▪ 1,050 SQ FT



This unique two bedroom, one bath apartment home is located in the Maria Linden addition. This sunny corner unit features an open concept living area containing a full-sized kitchen (with dishwasher), pantry closet, snack bar, room for a dining table and generous living room. The unique corner location of this unit creates a “split” bedroom arrangement with one bedroom located on either side of the living room. The two bedrooms share a bathroom with a built-in vanity cabinet, linen cabinet and large shower. The first bedroom measures 11-feet by 10-feet 9-inches. The second bedroom measures 11-feet by 11-feet 9-inches. This unit includes a small utility room with full-sized washer and dryer.